

Mathematics Test

Time: 60 minutes for 60 questions

Directions: Each question has five answer choices. Choose the best answer for each question, and then shade in the corresponding oval on your answer sheet.

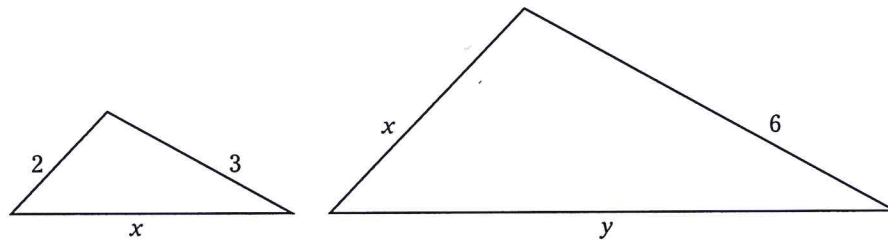
- Which of the following numbers completes the sequence 3, 8, 14, 21, 29, ___?
(A) 35
(B) 36
(C) 37
(D) 38
(E) 39
- Beth got a job painting dorm rooms at her college. At top speed, she could paint 5 identical rooms during one 6-hour shift. How long did she take to paint each room?
(F) 50 minutes
(G) 1 hour and 10 minutes
(H) 1 hour and 12 minutes
(J) 1 hour and 15 minutes
(K) 1 hour and 20 minutes
- If $5x + 3 = 10x - 17$, what is the value of x ?
(A) 1
(B) 2
(C) 3
(D) 4
(E) 5
- The number 4 is the smallest positive integer that has exactly three factors: 1, 2, and 4. If k is the next-highest integer that also has exactly three factors, what is the sum of the three factors of k ?
(F) 13
(G) 14
(H) 16
(J) 18
(K) 20
- William earned \$3,200 per month as a teacher for the ten months from September to June. Then he took a job as a barista at a local café, where he earned \$2,000 per month during July and August. What was his average monthly pay for the 12 months?
(A) \$2,400
(B) \$2,500
(C) \$2,600
(D) \$2,800
(E) \$3,000
- When you multiply a number by 4 and then subtract 7, the result is the same as if you first subtracted 7 from the same number and then multiplied by 11. What is the number?
(F) 10
(G) 13
(H) 19
(J) 23
(K) 31

Go on to next page 

7. Which of the following inequalities is represented by the following number line?



- (A) $-5 < x < 5$
(B) $-5 \leq x < 5$
(C) $-5 < x \leq 5$
(D) $|x| < 5$
(E) $5 \leq |x|$
8. In the following figure, the two triangles are similar. The lengths of their sides are shown. What is the value of y in terms of x ?



- (F) $x + 1$
(G) $x + 2$
(H) $x + 3$
(J) $x + 4$
(K) $x + 5$
9. Which of the following is equal to $(n - 3)^2$ if $n = 11$?
- (A) $(n + 6)(n - 6)$
(B) $(n + 5)(n - 7)$
(C) $(n + 4)(n - 8)$
(D) $(n + 3)(n - 9)$
(E) $(n + 2)(n - 10)$
10. A square field has an area of 22,500 square feet. To the nearest foot, what is the diagonal distance across the field?
- (F) 150 feet
(G) 178 feet
(H) 191 feet
(J) 212 feet
(K) 260 feet

Go on to next page

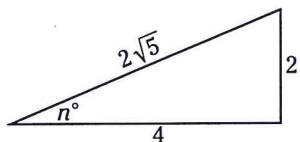
11. What is the slope of a line on a standard xy -plane that passes through the point $(1, 3)$ and $(4, -3)$?

(A) -1
 (B) 2
 (C) -2
 (D) $\frac{1}{2}$
 (E) $-\frac{1}{2}$

12. Andrea wants to fill in two sections of her backyard with sod that must be purchased in $2\text{-x-}2\text{-foot}$ squares. If the two sections measure 30×40 feet and 60×80 feet, how many squares of sod does she need to buy?

(F) $1,000$
 (G) $1,250$
 (H) $1,500$
 (J) $1,600$
 (K) $2,000$

13. In the following triangle, what is the value of $\sec n^\circ$?



(A) $\sqrt{5}$
 (B) $2\sqrt{5}$
 (C) $\frac{\sqrt{5}}{2}$
 (D) $\frac{\sqrt{5}}{5}$
 (E) $\frac{2\sqrt{5}}{5}$

14. If $pq - 3r = 2$, what is the value of q in terms of p and r ?

(F) $2p + 3pr$
 (G) $2p - 3pr$
 (H) $\frac{3r+2}{p}$
 (J) $\frac{3r-2}{p}$
 (K) $\frac{2-3r}{p}$

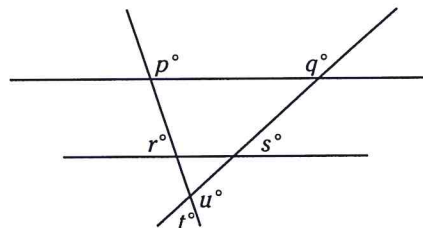
15. If $f(x) = 4x^2 - 5x - 5$ and $g(x) = 2^x - 4$, what is the value of $\frac{g(6)}{f(-5)}$?

(A) 1
 (B) 2
 (C) $\frac{1}{2}$
 (D) $\frac{2}{3}$
 (E) $\frac{3}{4}$

16. If you multiply two integers together and then add 4, the result is 40. Which of the following could NOT be the sum of the two numbers?

(F) 12
 (G) 13
 (H) 15
 (J) 18
 (K) 20

17. In the following figure, the two horizontal lines are parallel. Which of the following does NOT equal 180° ?



(A) $(p + r)^\circ$
 (B) $(p + t)^\circ$
 (C) $(q + s)^\circ$
 (D) $(r + s + t)^\circ$
 (E) $(t + u)^\circ$

Go on to next page

18. If a and b are the two values of t that satisfy the equation $t^2 - 6t + 8 = 0$, with $a > b$, what is the value of $a - b$?

(F) 2
(G) 4
(H) 6
(J) 8
(K) 10

19. A rectangular box has two sides whose lengths are 3 centimeters and 9 centimeters and a volume of 135 cm^3 . What is the area of its largest side?

(A) 27 cm^2
(B) 36 cm^2
(C) 39 cm^2
(D) 45 cm^2
(E) 48 cm^2

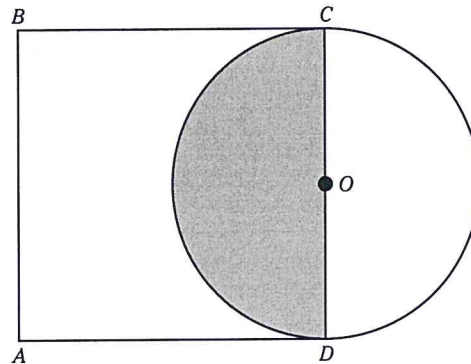
20. If you graph the lines $3x + 2y = -2$ and $5x - y = 14$ on a standard xy -graph, at which point will the lines intersect?

(F) $(1, -7)$
(G) $(2, -4)$
(H) $(-5, 4)$
(J) $(-9, 3)$
(K) $(11, 2)$

21. Which of the following equals $12x^2y^3z^4 - 30xy^2 + 24x^2y^5z$?

(A) $6xy^2(2yz^3 - 5 + 4xy^3)$
(B) $6xy^2(2xyz^4 - 5 + 4xy^3z)$
(C) $6xy^2z(2xyz^3 - 5 + 4xy^3)$
(D) $12x^2y^3(yz^4 - 5 + 2y^2z)$
(E) $12x^2y^3z(xy^2z^3 - 5z + 2y^2)$

22. In the following figure, $ABCD$ is a square and is a diameter of the circle centered at O . If the area of the square is 100, what is the area of the shaded region?



(F) 25π
(G) 50π
(H) 100π
(J) $\frac{5\pi}{2}$
(K) $\frac{25\pi}{2}$

23. Anderson has a phone plan that charges a monthly rate of \$50 for the first 1,000 minutes plus \$0.25 for each additional minute. Which of the following functions models Anderson's plan for all $m > 1,000$, with m as the number of minutes per month and $f(m)$ as the monthly charge?

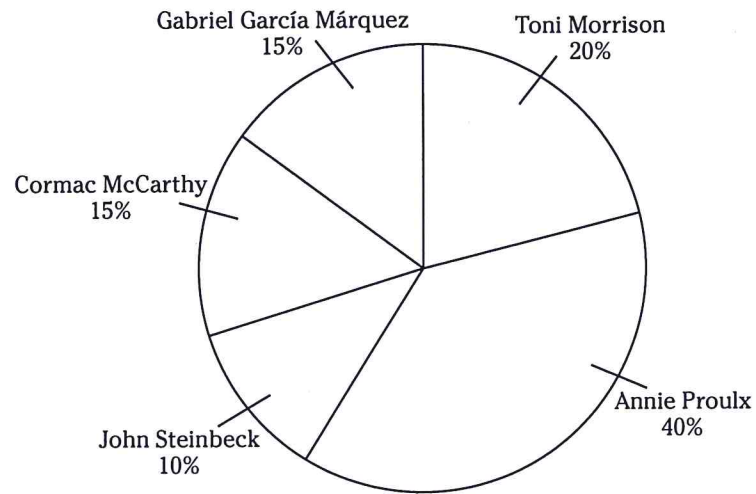
(A) $f(m) = 0.25m$
(B) $f(m) = 0.25m + 50$
(C) $f(m) = 0.25m - 200$
(D) $f(m) = 0.25m - 950$
(E) $f(m) = 0.25m + 1,000$

24. What is the x -intercept of a line that passes through the point $(3, 4)$ and has a slope of 2?

(F) -2
(G) -1
(H) 0
(J) 1
(K) 2

Go on to next page 

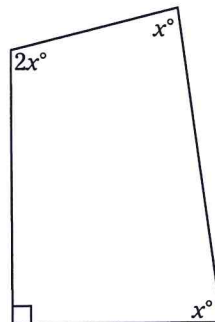
Questions 25 and 26 refer to the following figure, which shows a graph of the percentage of votes tallied by an online book club regarding the next author that the club should focus on.



25. Which of the following pairs of authors received exactly 30 percent of the votes altogether?
- (A) Cormac McCarthy and Toni Morrison
 - (B) Gabriel García Márquez and Toni Morrison
 - (C) Toni Morrison and Annie Proulx
 - (D) Toni Morrison and John Steinbeck
 - (E) Annie Proulx and John Steinbeck
26. If exactly 260 people voted, how many votes did Cormac McCarthy receive?
- (F) 15
 - (G) 30
 - (H) 33
 - (J) 39
 - (K) 45

Go on to next page

27. Anne and Katherine are both saving money from their summer jobs to buy bicycles. If Anne had \$150 less, she would have exactly $\frac{1}{3}$ as much as Katherine. And if Katherine had twice as much, she would have exactly 3 times as much as Anne. How much money have they saved together?
- (A) \$300
(B) \$400
(C) \$450
(D) \$625
(E) \$750
28. What is the solution set for x for the inequality $|2x + 7| > 11$?
- (F) $2 < x < 9$
(G) $-9 < x < 2$
(H) $x < 2$ or $x > 9$
(J) $x < -2$ or $x > 9$
(K) $x < -9$ or $x > 2$
29. On a standard xy -graph, what is the distance between $(-2, 4)$ and $(1, -2)$?
- (A) 5
(B) $3\sqrt{2}$
(C) $2\sqrt{3}$
(D) $5\sqrt{3}$
(E) $3\sqrt{5}$
30. If $\log_5 x = 2$, what is \sqrt{x} ?
- (F) 5
(G) 25
(H) 32
(J) $\sqrt{5}$
(K) $4\sqrt{2}$
31. If $pq + 12 = 3p + pr$, and $q - r = 7$, what is the value of p ?
- (A) -3
(B) -4
(C) $\frac{1}{3}$
(D) $\frac{3}{5}$
(E) $-\frac{6}{5}$
32. On his first day working out, Anthony did 30 push-ups. On each successive day, he did exactly 3 more push-ups than on the previous day. After completing his push-ups on the 30th day, how many push-ups had he completed on all 30 days?
- (F) fewer than 500
(G) between 500 and 1,000
(H) between 1,000 and 1,500
(J) between 1,500 and 2,000
(K) more than 2,000
33. The following figure is a quadrilateral with one right angle. The other angles are labeled. What is the value of x ?



- (A) 54
(B) 56.25
(C) 60
(D) 67.5
(E) 72

Go on to next page

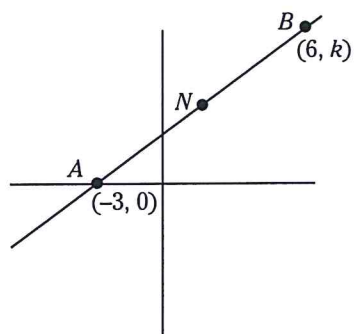
34. If a cube has a volume of $k \text{ cm}^3$ and a surface area of $10k \text{ cm}^2$, what is its height in centimeters?

- (F) $\frac{1}{2}$
- (G) $\frac{3}{4}$
- (H) $\frac{3}{5}$
- (J) $\frac{4}{5}$
- (K) $\frac{3}{10}$

35. If $8^{n-1} = \sqrt{2}$, then $n =$

- (A) $\frac{3}{2}$
- (B) $\frac{4}{3}$
- (C) $\frac{5}{4}$
- (D) $\frac{7}{6}$
- (E) $\frac{11}{10}$

36. In the following graph, N is the midpoint of \overline{AB} . Which of the following answer choices are the coordinates of N ?

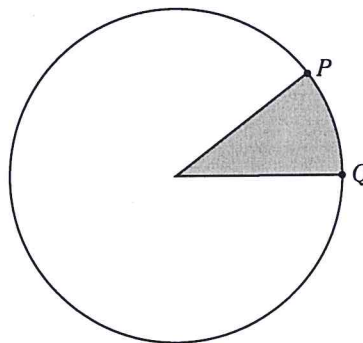


- (F) $(3, k)$
- (G) $(\frac{3}{2}, 3)$
- (H) $(\frac{3}{2}, k)$
- (J) $(\frac{3}{2}, \frac{k}{2})$
- (K) $(\frac{k}{2}, \frac{k}{3})$

37. If $\frac{a}{b} - \frac{c}{d} = 0$ and $bc = 7$, which of the following statements must be true?

- (A) a and b are directly proportional.
- (B) a and c are inversely proportional.
- (C) a and d are inversely proportional.
- (D) b and c are directly proportional.
- (E) c and d are inversely proportional.

38. In the following figure, the area of the shaded region is 10% of the area of the circle. If the radius of the circle is 10, what is the arc length from P to Q ?



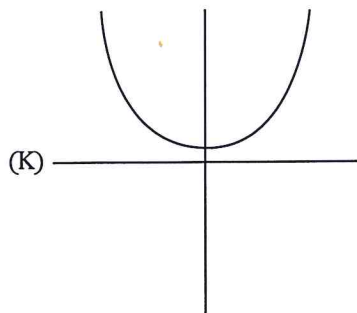
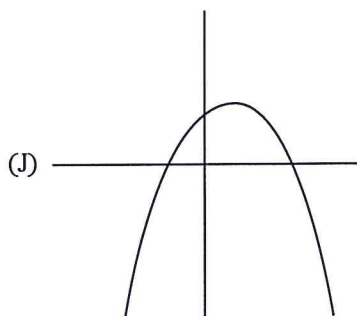
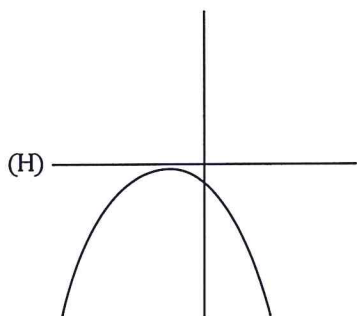
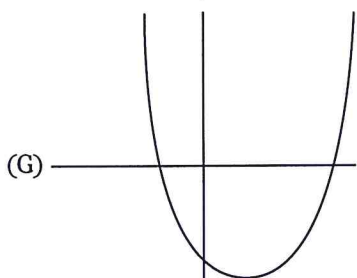
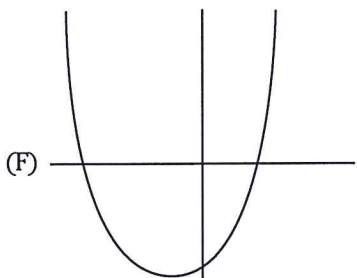
- (F) π
- (G) 2π
- (H) 4π
- (J) 5π
- (K) 10π

39. Given that $i^2 = -1$, what is the value of $(4 + 2i)(4 - 2i)$?

- (A) 12
- (B) 20
- (C) $16 - 4i$
- (D) $4 + 16i$
- (E) $12 - 16i$

Go on to next page

40. Which of the following could be the graph of the equation $y = 175x^2 - 33x - 2,000$?



41. Sebastian bought a meal at a restaurant and left a 15% tip. With the tip, he paid exactly \$35.19. How much did the meal cost without the tip?

- (A) \$28.98
 (B) \$29.91
 (C) \$30.15
 (D) \$30.60
 (E) \$30.85

42. If $\sin a = \frac{7}{8}$, what is the value of $\cos a$?

- (F) $\frac{8}{7}$
 (G) $\frac{\sqrt{15}}{7}$
 (H) $\frac{\sqrt{15}}{8}$
 (J) $\frac{7\sqrt{15}}{15}$
 (K) $\frac{8\sqrt{15}}{15}$

43. In the real numbers, which of the following is the domain of the function $f(x) = \frac{\sqrt{x-3}}{x-3}$?

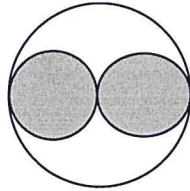
- (A) $x \geq 3$
 (B) $x > 3$
 (C) $x < -3$
 (D) $-3 < x < 3$
 (E) $x < -3$ or $x > 3$

44. Andrea and Zach are both waiting for an appointment with a guidance counselor. When they arrived, each received a card from the secretary, telling the hour and minute of his or her arrival. Two minutes ago, Andrea had been waiting exactly $\frac{1}{2}$ as many minutes as Zach. Three minutes from now, Andrea will have been waiting exactly $\frac{2}{3}$ as long as Zach. If the time is now 11:30, at what time did Andrea arrive?

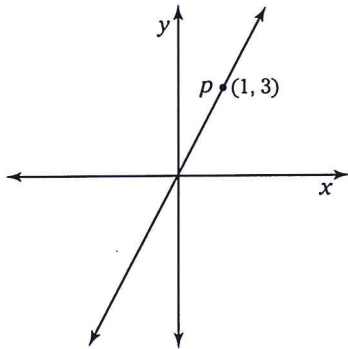
- (F) 11:16
 (G) 11:18
 (H) 11:20
 (J) 11:23
 (K) 11:25

Go on to next page

45. In the following figure, each circle is tangent to the other two circles, and the two shaded circles are identical to each other. What is the ratio of the shaded region to the nonshaded region?



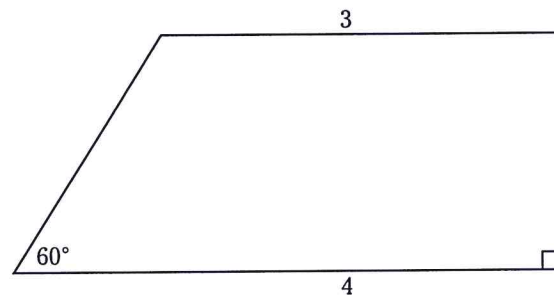
- (A) 1:1
 (B) 4:5
 (C) 5:4
 (D) 4:π
 (E) π:4
46. In the following figure, the line passes through the origin and through $P = (1, 3)$. If you were to draw a new line perpendicular to the first that also passes through P , what would be the equation of this new line?



- (F) $y = 3x + 4$
 (G) $y = \frac{1}{3}x + 4$
 (H) $y = \frac{1}{3}x + \frac{10}{3}$
 (J) $y = -\frac{1}{3}x + 4$
 (K) $y = -\frac{1}{3}x + \frac{10}{3}$

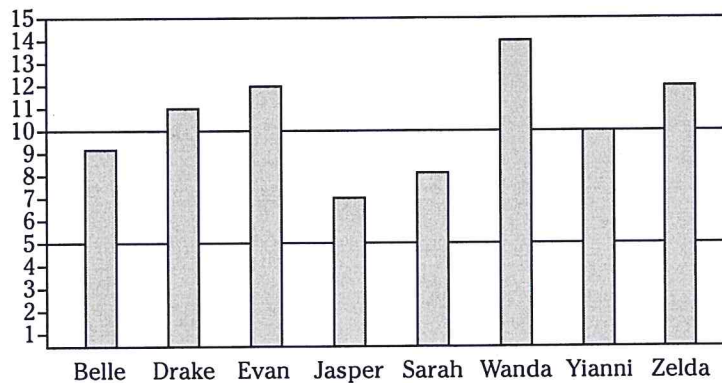
47. If $\begin{vmatrix} 6 & x & y \\ x & y & z \\ 9 & 7 & 5 \end{vmatrix} = 0$, then $x + y + z =$
- (A) 4
 (B) 5
 (C) 6
 (D) 7
 (E) 8

48. What is the area of the trapezoid in the following figure?

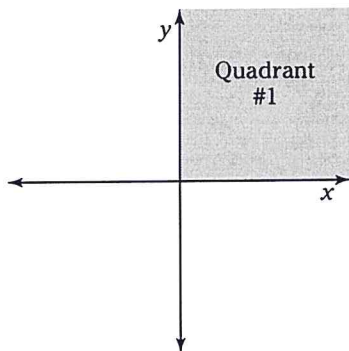


- (F) 7
 (G) $7\sqrt{2}$
 (H) $7\sqrt{3}$
 (J) $\frac{7\sqrt{3}}{2}$
 (K) $\frac{7\sqrt{3}}{4}$

49. The following graph shows the number of new bank accounts that eight account executives have opened so far this week. Which of the following answer choices is the median number of accounts opened among these eight people?



- (A) 9.5
 (B) 10
 (C) 10.5
 (D) 11
 (E) 12
50. If $x^2 - x - 2 > 0$, which of the following is the solution set for x ?
- (F) $x > -1$
 (G) $x > 2$
 (H) $-1 < x < 2$
 (J) $x < -1$ or $x > 2$
 (K) No solutions are possible.
51. If you plot the equation $x^2 + (y - 2)^2 = 4$ as a circle on a standard xy -graph, what is the area of the circle's region that will lie in Quadrant 1, as shown in the following figure?

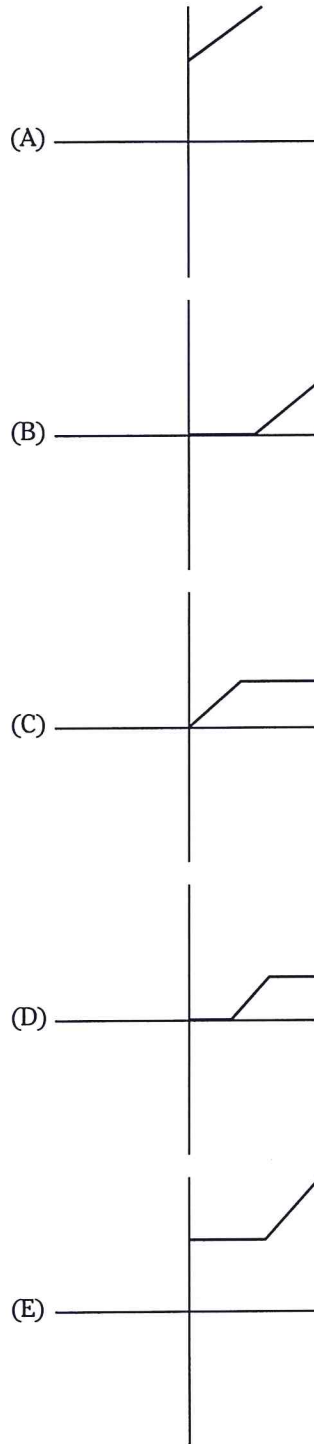


- (A) 0
 (B) π
 (C) 2π
 (D) 4π
 (E) 16π

Go on to next page

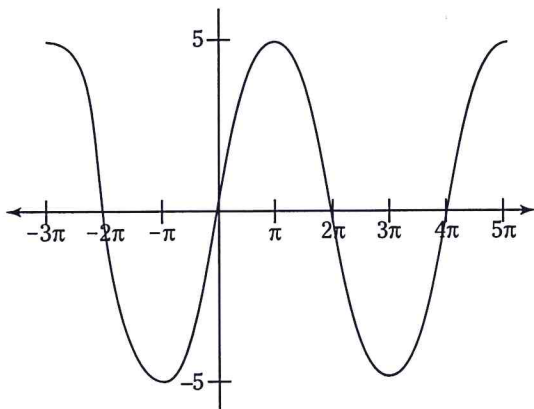
52. If $a + 2b = 2$, what is the value of $\left(\frac{a}{b-1}\right) + \left(\frac{a}{b-1}\right)^2 + \left(\frac{a}{b-1}\right)^3$?
- (F) -6
 (G) 8
 (H) 10
 (J) -12
 (K) 14
53. On an xy -graph, three corners of a parallelogram are located at $(3, 3)$, $(4, -4)$, and $(-2, -1)$. Which of the following points could be the remaining corner?
- (A) $(8, 0)$
 (B) $(8, -1)$
 (C) $(-1, 9)$
 (D) $(-3, 6)$
 (E) $(-5, 7)$
54. Doug, who runs track for his high school, was challenged to a race by his younger brother, Matt. Matt started running first, and Doug didn't start running until Matt had finished a quarter-mile lap on the school track. Doug passed Matt as they both finished their sixth lap. If both boys ran at a constant speed, with Doug running 2 miles an hour faster than Matt, what was Matt's speed?
- (F) 10.5 miles per hour
 (G) 10 miles per hour
 (H) 9 miles per hour
 (J) 8 miles per hour
 (K) 7.5 miles per hour

55. When calculating a certain tax, Simone found that no tax is due for all income up to p dollars, with $p > 0$. Income greater than p dollars is taxed at a rate of 15%. Which of the following graphs accurately represents this tax?



Go on to next page

56. The following figure shows the graph of $y = 5 \sin \frac{x}{2}$. Which of the answer choices are the correct amplitude and period of this function?



- (F) amplitude = 5, period = π
 (G) amplitude = 5, period = 2π
 (H) amplitude = 5, period = 4π
 (J) amplitude = 10, period = 2π
 (K) amplitude = 10, period = 4π
57. If the equation $x^2 + mx + n = 0$ has two solutions, $x = k$ and $x = 2k$, what is the value of mn in terms of k ?
- (A) $2k^2$
 (B) $-2k^2$
 (C) $-2k^3$
 (D) $6k^3$
 (E) $-6k^3$

58. When she chooses a password, Eloise always uses exactly ten different characters: five letters (A, B, C, D, and E) and five numbers (2, 3, 4, 5, and 6). Additionally, she always ensures that no pair of letters is consecutive and that no pair of numbers is consecutive. How many different passwords conform to these rules?
- (F) fewer than 1,000
 (G) between 1,000 and 10,000
 (H) between 10,000 and 100,000
 (J) between 100,000 and 1,000,000
 (K) more than 1,000,000
59. If the least common multiple of 9, 10, 12, and v is 540, which of the following could be v ?
- (A) 18
 (B) 24
 (C) 27
 (D) 36
 (E) 45
60. The equation $y = ax^b + c$ produces the following (x, y) coordinate pairs: $(0, 2)$, $(1, 7)$, and $(2, 42)$. What is the value of abc ?
- (F) 10
 (G) 20
 (H) 30
 (J) 40
 (K) 60



DO NOT TURN THE PAGE UNTIL TOLD TO DO SO.
 DO NOT RETURN TO A PREVIOUS TEST.

Mathematics Test Answer Sheet

1	(A)	(B)	(C)	(D)	(E)
2	(F)	(G)	(H)	(J)	(K)
3	(A)	(B)	(C)	(D)	(E)
4	(F)	(G)	(H)	(J)	(K)
5	(A)	(B)	(C)	(D)	(E)
<hr/>					
6	(F)	(G)	(H)	(J)	(K)
7	(A)	(B)	(C)	(D)	(E)
8	(F)	(G)	(H)	(J)	(K)
9	(A)	(B)	(C)	(D)	(E)
10	(F)	(G)	(H)	(J)	(K)
<hr/>					
11	(A)	(B)	(C)	(D)	(E)
12	(F)	(G)	(H)	(J)	(K)
13	(A)	(B)	(C)	(D)	(E)
14	(F)	(G)	(H)	(J)	(K)
15	(A)	(B)	(C)	(D)	(E)
<hr/>					
16	(F)	(G)	(H)	(J)	(K)
17	(A)	(B)	(C)	(D)	(E)
18	(F)	(G)	(H)	(J)	(K)
19	(A)	(B)	(C)	(D)	(E)
20	(F)	(G)	(H)	(J)	(K)
<hr/>					
21	(A)	(B)	(C)	(D)	(E)
22	(F)	(G)	(H)	(J)	(K)
23	(A)	(B)	(C)	(D)	(E)
24	(F)	(G)	(H)	(J)	(K)
25	(A)	(B)	(C)	(D)	(E)
<hr/>					
26	(F)	(G)	(H)	(J)	(K)
27	(A)	(B)	(C)	(D)	(E)
28	(F)	(G)	(H)	(J)	(K)
29	(A)	(B)	(C)	(D)	(E)
30	(F)	(G)	(H)	(J)	(K)

31	(A)	(B)	(C)	(D)	(E)
32	(F)	(G)	(H)	(J)	(K)
33	(A)	(B)	(C)	(D)	(E)
34	(F)	(G)	(H)	(J)	(K)
35	(A)	(B)	(C)	(D)	(E)
<hr/>					
36	(F)	(G)	(H)	(J)	(K)
37	(A)	(B)	(C)	(D)	(E)
38	(F)	(G)	(H)	(J)	(K)
39	(A)	(B)	(C)	(D)	(E)
40	(F)	(G)	(H)	(J)	(K)
<hr/>					
41	(A)	(B)	(C)	(D)	(E)
42	(F)	(G)	(H)	(J)	(K)
43	(A)	(B)	(C)	(D)	(E)
44	(F)	(G)	(H)	(J)	(K)
45	(A)	(B)	(C)	(D)	(E)
<hr/>					
46	(F)	(G)	(H)	(J)	(K)
47	(A)	(B)	(C)	(D)	(E)
48	(F)	(G)	(H)	(J)	(K)
49	(A)	(B)	(C)	(D)	(E)
50	(F)	(G)	(H)	(J)	(K)
<hr/>					
51	(A)	(B)	(C)	(D)	(E)
52	(F)	(G)	(H)	(J)	(K)
53	(A)	(B)	(C)	(D)	(E)
54	(F)	(G)	(H)	(J)	(K)
55	(A)	(B)	(C)	(D)	(E)
<hr/>					
56	(F)	(G)	(H)	(J)	(K)
57	(A)	(B)	(C)	(D)	(E)
58	(F)	(G)	(H)	(J)	(K)
59	(A)	(B)	(C)	(D)	(E)
60	(F)	(G)	(H)	(J)	(K)

Answer Key for Practice Test 1

1. D	21. B	41. D
2. H	22. K	42. H
3. D	23. C	43. B
4. F	24. J	44. J
5. E	25. D	45. A
6. F	26. J	46. K
7. B	27. E	47. E
8. J	28. K	48. J
9. B	29. E	49. C
10. J	30. F	50. J
11. C	31. A	51. C
12. H	32. K	52. F
13. C	33. D	53. D
14. H	34. H	54. G
15. C	35. D	55. B
16. J	36. J	56. H
17. B	37. C	57. E
18. F	38. G	58. H
19. D	39. B	59. C
20. G	40. G	60. H

Practice Test 1: Answers and Explanations

Congratulations! You've completed Practice Test 1! You're now ready to check your answers to see how you fared. In this chapter, I provide the answers, including detailed explanations and a bare-bones answer key. The answer key is great for when you're checking your answers in a hurry, but I suggest that you review the detailed explanations for each question — even those you answered correctly. You'll be surprised at how many tips and tricks you find throughout these explanations. Good luck!

Mathematics Test

- D.** The numbers increase at a somewhat steady rate, so you have to figure out how much you have to add to each number to produce the next in the sequence: $3 + 5 = 8$; $8 + 6 = 14$; $14 + 7 = 21$; $21 + 8 = 29$, and so on. The rule for the sequence is to add successively larger numbers to each number; therefore, the next number is $29 + 9 = 38$.
- H.** Six hours equals 360 minutes, so Beth paints 5 rooms in 360 minutes. She paints 1 room in $360 \div 5 = 72$ minutes, which equals 1 hour and 12 minutes.

- D.** Solve for x :

$$5x + 3 = 10x - 17$$

$$20 = 5x$$

$$4 = x$$

- F.** The greatest of the five possible answers is 20, so k is less than 20. Use trial and error to find the value of k :

Factors of 5: 1 5

Factors of 6: 1 2 3 6

Factors of 7: 1 7

Factors of 8: 1 2 4 8

Factors of 9: 1 3 9

Thus, $k = 9$, and the sum of the factors of k is $1 + 3 + 9 = 13$.

- E.** William earned $\$3,200 \times 10 = \$32,000$ as a teacher, and he earned $\$2,000 \times 2 = \$4,000$ as a barista. So he earned $\$32,000 + \$4,000 = \$36,000$ over the 12 months. Plug these values into the formula for the mean:

$$\text{Mean} = \frac{\text{Sum of values}}{\text{Number of values}} = \frac{36,000}{12} = 3,000$$

6. **F.** Let x equal the number and then change the words into an equation and solve for x :

$$4x - 7 = 11(x - 7)$$

$$4x - 7 = 11x - 77$$

$$70 = 7x$$

$$10 = x$$

7. **B.** The number line includes all values that are both greater than or equal -5 , but strictly less than 5 , so the correct answer is Choice (B).

8. **J.** The small triangle has a side with the length of 3 , and the large triangle has a corresponding side with the length of 6 , which is twice as long. The triangles are similar, so each side of the large triangle is twice the length of the corresponding side of the small triangle. One side of the small triangle has a length of 2 , so the corresponding side of the large triangle is 4 ; thus, $x = 4$. One side of the small triangle has a length of 4 , so the corresponding side of the large triangle is 8 ; thus, $y = 8$. Therefore, $y = x + 4$.

9. **B.** If $n = 11$, then:

$$(n - 3)^2 = (11 - 3)^2 = 8^2 = 64$$

Substitute 11 for n into each answer until you find one that equals 64 :

$$(n + 6)(n - 6) = (17)(5) = 85 \quad \text{Wrong!}$$

$$(n + 5)(n - 7) = (16)(4) = 64 \quad \text{You've found a match!}$$

10. **J.** The area of the field is $22,500$ square feet, so plug this value into the formula for the area of a square to find the length of the side:

$$A = s^2$$

$$22,500 = s^2$$

$$150 = s$$

So the side of the field measures 150 feet. The diagonal of a square is the hypotenuse of a 45 - 45 - 90 triangle, which has three sides in a ratio of $x : x : x\sqrt{2}$. Thus, the length of this diagonal is $150\sqrt{2} \approx 212$. (You can also use the Pythagorean theorem to find this result.)

11. **C.** Plug the values for the coordinates into the formula for the slope of a line:

$$\text{Slope} = \frac{y_2 - y_1}{x_2 - x_1} = \frac{-3 - 3}{4 - 1} = \frac{-6}{3} = -2$$

12. **H.** To begin, find the area of each of the two sections by multiplying the lengths of the sides:

$$30 \text{ feet} \times 40 \text{ feet} = 1,200 \text{ square feet}$$

$$60 \text{ feet} \times 80 \text{ feet} = 4,800 \text{ square feet}$$

The total area that needs sod has an area of $1,200 + 4,800 = 6,000$ square feet. Each individual square is 2 feet by 2 feet, so each has an area of 4 square feet. Because all the numbers are even, there will be no waste when the squares of sod are placed. Therefore, you just have to find the number of squares needed by dividing:

$$6,000 \div 4 = 1,500$$

13. **C.** The secant of an angle equals the hypotenuse over the adjacent angle, so

$$\sec n = \frac{H}{A} = \frac{2\sqrt{5}}{4} = \frac{\sqrt{5}}{2}$$

14. H. Solve the equation $pq - 3r = 2$ in terms of p and r by isolating the q on one side of the equal sign as follows:

$$pq - 3r = 2$$

$$pq = 3r + 2$$

$$q = \frac{3r + 2}{p}$$

15. C. The problem states that $f(x) = 4x^2 - 5x - 5$, so

$$f(-5) = 4(-5)^2 - 5(-5) - 5 = 100 + 25 - 5 = 120$$

You also know that $g(x) = 2^x - 4$, so

$$g(6) = 2^6 - 4 = 64 - 4 = 60$$

Therefore:

$$\frac{g(6)}{f(-5)} = \frac{60}{120} = \frac{1}{2}$$

16. J. Let the two integers equal x and y , and then create the following equation and simplify:

$$xy + 4 = 40$$

$$xy = 36$$

So x and y are a pair of integers that equal 36. Try adding all possible combinations of two integers that multiply out to 36:

$$1 \times 36 = 36 \quad 1 + 36 = 37$$

$$2 \times 18 = 36 \quad 2 + 18 = 20$$

$$3 \times 12 = 36 \quad 3 + 12 = 15$$

$$4 \times 9 = 36 \quad 4 + 9 = 13$$

$$6 \times 6 = 36 \quad 6 + 6 = 12$$

This list of sums includes 12, 13, 15, and 20, but not 18. Thus, no pair of integers both satisfies the original equation and adds up to 18.

17. B. $\angle p$ and $\angle r$ are opposite angles on the parallel lines, so they total 180° , which rules out Choice (A). The same is true of $\angle q$ and $\angle s$, ruling out Choice (C). $\angle t$ and $\angle u$ are supplementary, so they add up to 180° , which rules out Choice (E). Finally, $\angle r$, $\angle s$, and $\angle t$ are all vertical angles with the three interior angles of a triangle, so they total 180° , ruling out Choice (D). By elimination, the correct answer is Choice (B).
18. F. Factor the left side of the equation:

$$t^2 - 6t + 8 = 0$$

$$(t - 2)(t - 4) = 0$$

Split this equation into two equations and solve:

$$t - 2 = 0$$

$$t = 2$$

$$t - 4 = 0$$

$$t = 4$$

Thus, $a = 4$ and $b = 2$. So $a - b = 4 - 2 = 2$.

19. **D.** The box has dimensions of 3 and 9 and a volume of 135, so plug these values into the formula for the volume of a box:

$$\begin{aligned}V &= lwh \\135 &= (3)(9)h \\135 &= 27h \\5 &= h\end{aligned}$$

So the remaining dimension of the box is 5. The two longest dimensions are 5 and 9, so the area of the largest side is $5 \times 9 = 45$.

20. **G.** Solve the two equations, $3x + 2y = -2$ and $5x - y = 14$, as a system of equations. To do this, multiply the second equation by 2 and then add it to the first equation:

$$\begin{array}{r}3x + 2y = -2 \\+ 10x - 2y = 28 \\ \hline13x = 26\end{array}$$

Now solve for x :

$$x = 2$$

Replace x with 2 in either equation and solve for y :

$$\begin{aligned}3(2) + 2y &= -2 \\6 + 2y &= -2 \\2y &= -8 \\y &= -4\end{aligned}$$

At the point of intersection, $x = 2$ and $y = -4$, so this point is $(2, -4)$.

21. **B.** The greatest common factor among the three terms in $12x^2y^3z^4 - 30xy^2 + 24x^2y^5z$ is $6xy^2$, so you can rule out Choices (C), (D), and (E). When you factor out $6xy^2$, the first term reduces to $2xyz^4$, so you also can rule out Choice (A).
22. **K.** The area of the square is 100, so each side of the square is 10 (because $10^2 = 100$). The diameter of the circle is 10, so its radius is 5. Plug this value into the area formula for a circle:

$$A = \pi r^2 = \pi(5)^2 = 25\pi$$

The shaded region is half of this area, which is $\frac{25\pi}{2}$.

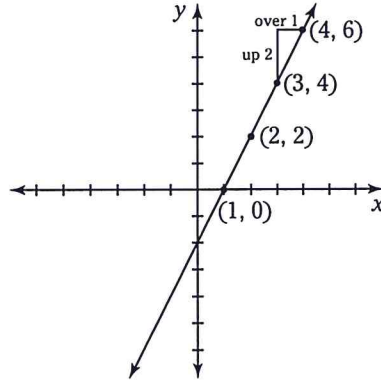
23. **C.** For $m > 1,000$ — that is, beyond 1,000 minutes of usage — the plan charges a usage fee based on the number of minutes used plus a flat rate of \$50. With this information, you can create the following function:

$$f(m) = \text{Usage fee} + 50$$

The usage fee is \$0.25 per minute; however, the first 1,000 minutes are already paid for. So the usage fee is $0.25(m - 1,000)$. Plug this value into the preceding function and simplify:

$$\begin{aligned}f(m) &= 0.25(m - 1,000) + 50 \\f(m) &= 0.25m - 250 + 50 \\f(m) &= 0.25m - 200\end{aligned}$$

24. **J.** First, plot the point (3, 4) on a graph. A slope of 2 means “up 2, over 1,” so plot this point on a graph, too. Here’s the resulting graph:



The line passes through the x -axis at 1, making the correct answer Choice (J).

25. **D.** Toni Morrison received 20% of the vote and John Steinbeck received 10%, so together they received 30%.
26. **J.** Cormac McCarthy received 15% of the vote, so use your calculator to find 15% of 260 = 39.
27. **E.** If Anne had \$150 less, Katherine would have three times more than Anne. Make this statement into an equation and simplify:

$$3(a - 150) = k$$

$$3a - 450 = k$$

And if Katherine had twice as much, she would have three times more than Anne:

$$2k = 3a$$

Substitute $3a - 450$ for k into the last equation and solve for a

$$2(3a - 450) = 3a$$

$$6a - 900 = 3a$$

$$-900 = -3a$$

$$300 = a$$

Now substitute 300 for a into the same equation and solve for k :

$$2k = 3(300)$$

$$2k = 900$$

$$k = 450$$

Thus, together Anne and Katherine have $300 + 450 = 750$, so the right answer is Choice (E).

28. K. Split the inequality $|2x + 7| > 11$ into two inequalities: $2x + 7 > 11$ and $2x + 7 < -11$.
Solve both for x :

$$\begin{array}{ll} 2x + 7 > 11 & 2x + 7 < -11 \\ 2x > 4 & 2x < -18 \\ x > 2 & x < -9 \end{array}$$

Therefore, $x < -9$ or $x > 2$.

29. E. Plug the values into the distance formula:

$$\text{Distance} = \sqrt{(x_2 - x_1)^2 + (y_2 - y_1)^2} = \sqrt{(1 - (-2))^2 + (-2 - 4)^2}$$

Simplify:

$$= \sqrt{3^2 + 6^2} = \sqrt{9 + 36} = \sqrt{45} = 3\sqrt{5}$$

30. F. To answer this question, you first have to solve for x . To do so, turn the log into an exponent:

$$\log_5 x = 2 \quad \text{means} \quad 5^2 = x$$

Thus, $x = 25$. The question asks for \sqrt{x} , so here's your answer:

$$\sqrt{x} = \sqrt{25} = 5$$

31. A. To begin, isolate the q and r terms in the first equation:

$$\begin{aligned} pq + 12 &= 3p + pr \\ pq - pr + 12 &= 3p \\ pq - pr &= 3p - 12 \end{aligned}$$

Now factor out p on the left side of the equation:

$$p(q - r) = 3p - 12$$

Substitute 7 for $q - r$ and solve for p :

$$\begin{aligned} 7p &= 3p - 12 \\ 4p &= -12 \\ p &= -3 \end{aligned}$$

32. K. Anthony completed 30 push-ups the first day, 33 the second day, 36 the third day, and so on. Make a chart as follows:

1	2	3	4	5 ...	10 ...	15 ...	20 ...	25 ...	30
30	33	36	39	42	57	72	87	102	117

To save time adding all these numbers, notice that the total of the first and 30th numbers is $30 + 117 = 147$. This total is the same for the 2nd and 29th, the 3rd and 28th, and so on all the way to the 15th and 16th. Therefore, you have 15 pairings of days on which Anthony completed 147 pushups. You can simply multiply to find the total: $147 \times 15 = 2,205$.

33. D. A quadrilateral has four angles that add up to 360° , so make an equation as follows:

$$90 + 2x + x + x = 360$$

$$90 + 4x = 360$$

$$4x = 270$$

$$x = 67.5$$

34. H. Plug k into the formula for the volume of a cube and $10k$ into the formula for the volume of the surface area of a cube:

$$k = s^3$$

$$10k = 6s^2$$

Substitute s^3 for k in the second equation and solve for s :

$$10s^3 = 6s^2$$

$$10s = 6$$

$$s = \frac{6}{10}$$

$$s = \frac{3}{5}$$

35. D. To begin, put the equation in terms of two powers with the same base. A good base to use is 2:

$$8^{n-1} = \sqrt{2}$$

$$(2^3)^{n-1} = 2^{\frac{1}{2}}$$

$$2^{3(n-1)} = 2^{\frac{1}{2}}$$

Because the bases are the same, the exponents are also the same. As a result, you can drop the bases and make an equation by setting the exponents equal to each other:

$$3(n-1) = \frac{1}{2}$$

Now solve for n :

$$3n - 3 = \frac{1}{2}$$

$$3n = \frac{7}{2}$$

$$n = \frac{7}{6}$$

36. J. To answer this question, you simply use the midpoint formula:

$$\text{Midpoint} = \left(\frac{x_1 + x_2}{2}, \frac{y_1 + y_2}{2} \right) = \left(\frac{-3 + 6}{2}, \frac{0 + k}{2} \right) = \left(\frac{3}{2}, \frac{k}{2} \right)$$

37. C. To begin, simplify the problem to remove the fractions:

$$\frac{a}{b} - \frac{c}{d} = 0$$

$$\frac{a}{b} = \frac{c}{d}$$

$$ad = bc$$

Now substitute 7 for bc :

$$ad = 7$$

Because ad equals a constant, a and d are inversely proportional.

38. G. Plug the radius of 10 into the formula for the circumference of a circle:

$$C = 2\pi r = 2\pi(10) = 20\pi$$

The area of the shaded region is 10% of the area of the circle, so the arc length from P to Q is 10% of the circumference of the circle. Therefore, the arc length is 2π .

39. B. To begin, FOIL the values in the parentheses:

$$(4 + 2i)(4 - 2i) = 16 - 8i + 8i - 4i^2 = 16 - 4i^2$$

Substitute -1 for i^2 :

$$= 16 - 4(-1) = 16 + 4 = 20$$

40. G. In this quadratic function of the form $y = ax^2 + bx + c$, $a = 175$, $b = -33$, and $c = -2,000$.

Because a is positive, the parabola is concave up, which rules out Choices (H) and (J). Because c is negative, the y intercept is below the origin, which rules out Choice (K). Because a and b have different signs, the graph shifts to the right, which rules out Choice (F). So, by elimination, you know that the correct answer is Choice (G).

41. D. The tip is a percent increase of 15%, which is 115%. Let x equal the price before the tip. Thus, 115% of this price equals \$35.19:

$$1.15x = 35.19$$

Divide both sides by 1.15:

$$x = \frac{35.19}{1.15} = 30.60$$

42. H. The sine of an angle is the length of the opposite side over the length of the hypotenuse ($\frac{O}{H}$). So

$$\frac{O}{H} = \frac{7}{8}$$

You know the lengths of one leg and the hypotenuse of this triangle, so use the Pythagorean theorem to find length of the remaining adjacent leg:

$$a^2 + b^2 = c^2$$

$$7^2 + b^2 = 8^2$$

$$49 + b^2 = 64$$

$$b^2 = 15$$

$$b = \sqrt{15}$$

Now you can plug the values into the cosine formula:

$$\cos a = \frac{A}{H} = \frac{\sqrt{15}}{8}$$

43. **B.** The domain of the function can't include a negative value inside the radical, so set the value inside the radical greater than or equal to 0 and solve for x :

$$\begin{aligned}x - 3 &\geq 0 \\x &\geq 3\end{aligned}$$

The domain also can't include 0 in the denominator, so set the denominator equal to 0 and solve for x to find excluded values:

$$\begin{aligned}x - 3 &= 0 \\x &= 3\end{aligned}$$

The value 3 also is excluded from the domain, so $x > 3$.

44. **J.** Let a equal the number of minutes that Andrea had been waiting two minutes ago. At that time, Zach had been waiting for twice as long as Andrea, so he had been waiting for $2a$ minutes. Three minutes from now, both Andrea and Zach will each have been waiting for 5 minutes longer:

	<i>Two minutes ago</i>	<i>Three minutes from now</i>
Andrea	a	$a + 5$
Zach	$2a$	$2a + 5$

Three minutes from now, Andrea will have been waiting for $\frac{2}{3}$ as long as Zach, so make an equation as follows:

$$\begin{aligned}a + 5 &= \frac{2}{3}(2a + 5) \\3a + 15 &= 2(2a + 5) \\3a + 15 &= 4a + 10 \\3a + 5 &= 4a \\5 &= a\end{aligned}$$

Thus, two minutes ago, at 11:28, Andrea had been waiting for 5 minutes. So she arrived at 11:23.

45. **A.** Let x equal the radius of a shaded circle, and then plug this value into the formula for the area of a circle:

$$A = \pi r^2 = \pi x^2$$

The area of the shaded region is two of these circles, so it's $2\pi x^2$. The shaded circles are identical, so the radius of a shaded circle is half that of the large circle. As a result, the radius of the large circle is $2x$. Use the formula for the area of the circle:

$$A = \pi r^2 = \pi(2x)^2 = 4\pi x^2$$

You already know that $2\pi x^2$ of this area is shaded, so the other $2\pi x^2$ is not. Thus, the shaded and nonshaded regions are the same size. In other words, they're in a 1:1 ratio.

46. **K.** The line that's shown in the figure passes through $(0, 0)$ and $(1, 3)$, so its slope is "up 3, over 1":

$$\frac{3}{1} = 3$$

Thus, the new line that's perpendicular to this line, and passing through $P = (1, 3)$, will have a negative reciprocal slope, which is $-\frac{1}{3}$. To find the equation of this line, plug these numbers into the slope-intercept form to get b :

$$y = mx + b$$

$$3 = -\frac{1}{3}(1) + b$$

$$3 = -\frac{1}{3} + b$$

$$\frac{10}{3} = b$$

Finally, plug in the values to get the equation for this line:

$$y = -\frac{1}{3}x + \frac{10}{3}$$

47. **E.** To add two matrices, you add the corresponding components. So this matrix equation yields the following three equations:

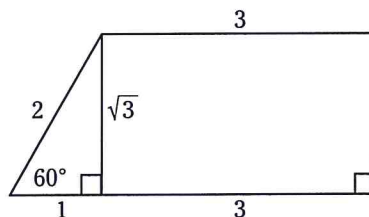
$$6 + x = 9$$

$$x + y = 7$$

$$y + z = 5$$

In the first equation, $x = 3$. Substituting 3 for x in the second equation gives you $3 + y = 7$, so $y = 4$. If you substitute 4 for y in the third equation, you get $4 + z = 5$; therefore, $z = 1$. Therefore, $x + y + z = 3 + 4 + 1 = 8$.

48. **J.** To begin, add a line to the figure, cutting off a 30-60-90 triangle on the left side of the trapezoid, as shown here:



Notice that the short leg of this triangle has a length of 1, so the height of the trapezoid is $\sqrt{3}$. Plug this value, plus the lengths of the two bases, into the formula for a trapezoid to get your answer:

$$A = \frac{b_1 + b_2}{2} h = \frac{3 + 4}{2} \sqrt{3} = \frac{7\sqrt{3}}{2}$$

49. C. Place the numbers of accounts sold in order from smallest to largest:

7 8 9 10 11 12 12 14

The middle two numbers are 10 and 11, so the median is the average of these two numbers, which is 10.5.

50. J. Begin by treating the inequality $x^2 - x - 2 > 0$ as if it were an equation. Factor to find the zeros:

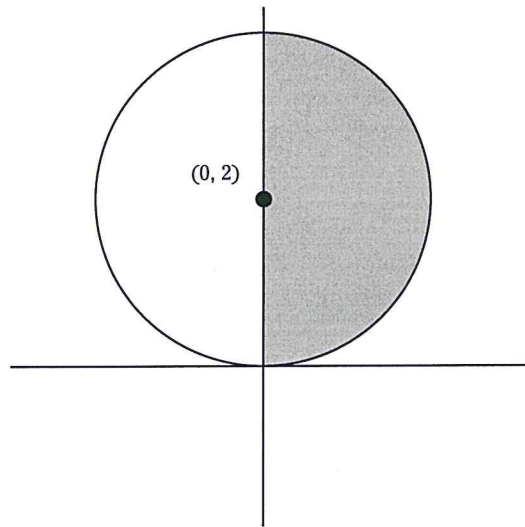
$$x^2 - x - 2 = 0$$

$$(x + 1)(x - 2) = 0$$

$$x = -1 \text{ and } x = 2$$

The graph of this function is a parabola that crosses the x -axis at -1 and 2 . This graph is concave up because the coefficient of the x^2 term (that is, a) is positive. The parabola dips below the x -axis when $-1 < x < 2$, so these values do *not* satisfy the equation. Therefore, the correct answer is Choice (J). (If you doubt this answer, note that when $x = 0$, $x^2 - x - 2 = -2$, which is less than 0. So 0 is *not* in the solution set.)

51. C. The formula for a circle with a radius r centered at (a, b) is $(x - a)^2 + (y - b)^2 = r^2$. Thus, $x^2 + (y - 2)^2 = 4$ has a radius of 2 and is centered at $(0, 2)$, as shown here:



This circle has a radius of 2, so calculate its total area as follows:

$$A = \pi r^2 = \pi(2)^2 = 4\pi$$

Because half the circle is in Quadrant 1, the area of this region is 2π .

52. F. Begin by finding the value of $\frac{a}{b-1}$:

$$a + 2b = 2$$

$$a = 2 - 2b$$

$$a = 2(1 - b)$$

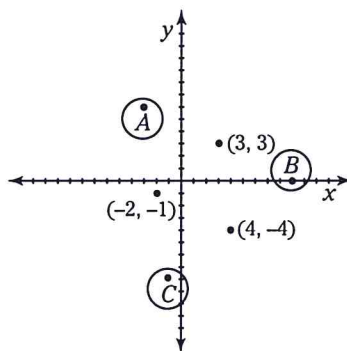
$$a = -2(b - 1)$$

$$\frac{a}{b-1} = -2$$

Now substitute -2 for $\frac{a}{b-1}$ to get your answer:

$$\begin{aligned} & \left(\frac{a}{b-1}\right) + \left(\frac{a}{b-1}\right)^2 + \left(\frac{a}{b-1}\right)^3 \\ & = -2 + (-2)^2 + (-2)^3 \\ & = -2 + 4 - 8 \\ & = -6 \end{aligned}$$

53. D. A good way to begin is to draw a picture showing the three points given, including possible places where a fourth point would form a parallelogram. Here's what your picture may look like:



This figure shows three possible points for the remaining corner of the parallelogram: A , B , and C . To find the exact coordinates of these three additional points, choose any of the given points and count up and over (or down and over) to a second given point. Then, starting from the third given point, count the same number of steps up and over (or down and over) and label the point where you end up.

By this method, you find that $A = (-3, 6)$, $B = (9, 0)$, and $C = (-1, -8)$. Only point A is listed as an answer.

54. G. Doug runs 2 miles an hour faster than Matt, so let Matt's speed equal x miles per hour. Then Doug's speed equals $x + 2$ miles per hour. Each lap is one-quarter of a mile, so Doug runs 1.5 miles in the time it takes Matt to run 1.25 miles. Place this information in a chart:

	<i>Rate</i>	<i>Time</i>	<i>Distance</i>
Doug	$x + 2$	$\frac{1.5}{x+2}$	1.5
Matt	x	$\frac{1.25}{x}$	1.25

The two boys took the same amount of time from the time Doug started, so make an equation by setting the two times in the chart equal to each other, and then solve for x :

$$\begin{aligned}\frac{1.5}{x+2} &= \frac{1.25}{x} \\ 1.5x &= 1.25(x+2) \\ 1.5x &= 1.25x + 2.5 \\ 0.25x &= 2.5 \\ x &= 10\end{aligned}$$

So Matt ran at 10 miles per hour.

55. **B.** For income less than p dollars, the tax rate is \$0, so the line should begin at the origin; therefore, you can rule out Choices (A) and (E). For income greater than p dollars, the tax rate increases at a steady rate without leveling off, so you can rule out Choices (C) and (D). By elimination you know that the correct answer is Choice (B).
56. **H.** The *amplitude* is the vertical distance from the midpoint to the crest, so in this case it's 5. The *period* is the horizontal distance between two adjacent crests, so it's 4π .
57. **E.** Given that the equation $x^2 + mx + n = 0$ has two solutions, $x = k$ and $x = 2k$, you can work backward to build the original equation. Here's how:

$$\begin{array}{ll}x = k & x = 2k \\ x - k = 0 & x - 2k = 0\end{array}$$

Now take the two equations and combine them:

$$\begin{aligned}(x - k)(x - 2k) &= 0 \\ x^2 - 2kx - kx + 2k^2 &= 0 \\ x^2 - 3kx + 2k^2 &= 0\end{aligned}$$

As you can see, $m = -3k$ and $n = 2k^2$, so $mn = -6k^3$.

58. **H.** The first character of the password can be any letter or number, so Eloise has ten options. Her second choice must be from the set (letter or number) not yet used, so she has five options. Choice 3 is from the same set as Choice 1, and she has four options left. Choice 4 is the second item from the same set as Choice 2, so she has four options. Choices 5 and 6 are from different sets, each with three options; Choices 7 and 8 are from different sets, each with two options; Choices 9 and 10 are from different sets, each with only one option remaining. You can see this information in the following chart:

1st	2nd	3rd	4th	5th	6th	7th	8th	9th	10th
10	5	4	4	3	3	2	2	1	1

To find the total number of possible passwords, multiply these numbers together:

$$10 \times 5 \times 4 \times 4 \times 3 \times 3 \times 2 \times 2 \times 1 \times 1 = 28,800$$

59. **C.** To begin, notice that 540 isn't a multiple of 24, so you can rule out Choice (B). Now find the least common multiple (LCM) of 9, 10, and 12. The LCM of 9 and 10 is 90, so the LCM of 9, 10, and 12 must be a multiple of 90. Here are the first six multiples of 90:

90, 180, 270, 360, 450, 540

The number 180 is a multiple of 12 as well, so the LCM of 9, 10, and 12 is 180. However, 180 also is a multiple of 18, 36, and 45. So if any of these numbers were v , the LCM of 9, 10, 12, and v would be 180. As a result, you can rule out Choices (A), (D), and (E), leaving Choice (C) as your only answer.

60. **H.** To begin, plug $x = 0$ and $y = 2$ into the equation $y = ax^b + c$. Note that the first term drops out:

$$2 = a(0)^b + c$$

$$2 = c$$

Now you can substitute 2 for c in the original equation, giving you $y = ax^b + 2$. Next, plug in $x = 1$ and $y = 7$. Notice that everything drops out except for the coefficient of the first term:

$$7 = a(1)^b + 2$$

$$5 = a$$

You can now substitute 5 for a in the equation, giving you $y = 5x^b + 2$. Now plug in $x = 2$ and $y = 42$:

$$42 = 5(2)^b + 2$$

$$40 = 5(2)^b$$

$$8 = 2^b$$

$$2^3 = 2^b$$

$$3 = b$$

Finally, you can see that $abc = (5)(3)(2) = 30$.